

Pangea

Pangea™

Can a typeface make the world a better place? Well, it can try to.

25% of all designer royalties will be donated to preserving the rainforest and to implementing reforestation projects.

Design

Christoph Koeberlin

Design Contributions

Gergő Kókai

Tanya George (Italics)

Gabriel Richter (Italics)

Andreas Frohloff

Ilya Ruderman (Cyrillic
Consultancy)

Irene Vlachou (Greek
Consultancy)

Donny Trương (Vietnamese
Consultancy)

Paul Hanslow (African Latin
Consultancy)

Mastering, Production

Christoph Koeberlin

Andreas Frohloff

Igino Marini (Spacing/
Kerning)

Marketing

Christoph Koeberlin (Naming)

Ivo Gabrowitsch (Copywriting,
Imagery, Specimen)

Anja Knust (Graphic Design,
Imagery)

Nik Stohn (Motion Design)

Lucy Beckley (English Translation)

Jana Kühl (Imagery)

Design Period; Initial Release

2016–2021; July 20, 2020

Latest Updates

Version 1.003 (African Latin) Dec.
20, 2021; Version 1.002 (Italics)
March 9, 2021

Languages

522 (459 Latin, 69 Cyrillic, 1 Greek)
(see page 9)

Glyphs Per Font

1134 (see page 12)

Styles

5 upright weights and
corresponding italics (see page 5)

Modifications & Extensions

Available on request

Licensing; Pricing

Trial Free Test license

Standard Combined Print, Web,
App and eBook license,
starting at €50

Extended Larger license volume
and additional Broadcasting,
starting at €500

Further types of license available
on request

Formats

OTF, WOFF, WOFF2; Further
formats available on request

Variable Fonts

Included in the Superfamily
package at no extra cost.

9 axes: weights, ascenders,
descenders, openness of shapes,
spacing, angle of the slope, ink
traps, alternates

File sizes: 471 KB Desktop, 160 KB
Web (WOFF), 138 KB (WOFF2)

Trademarks

Pangea™ is a trademark of
Fontwerk GmbH

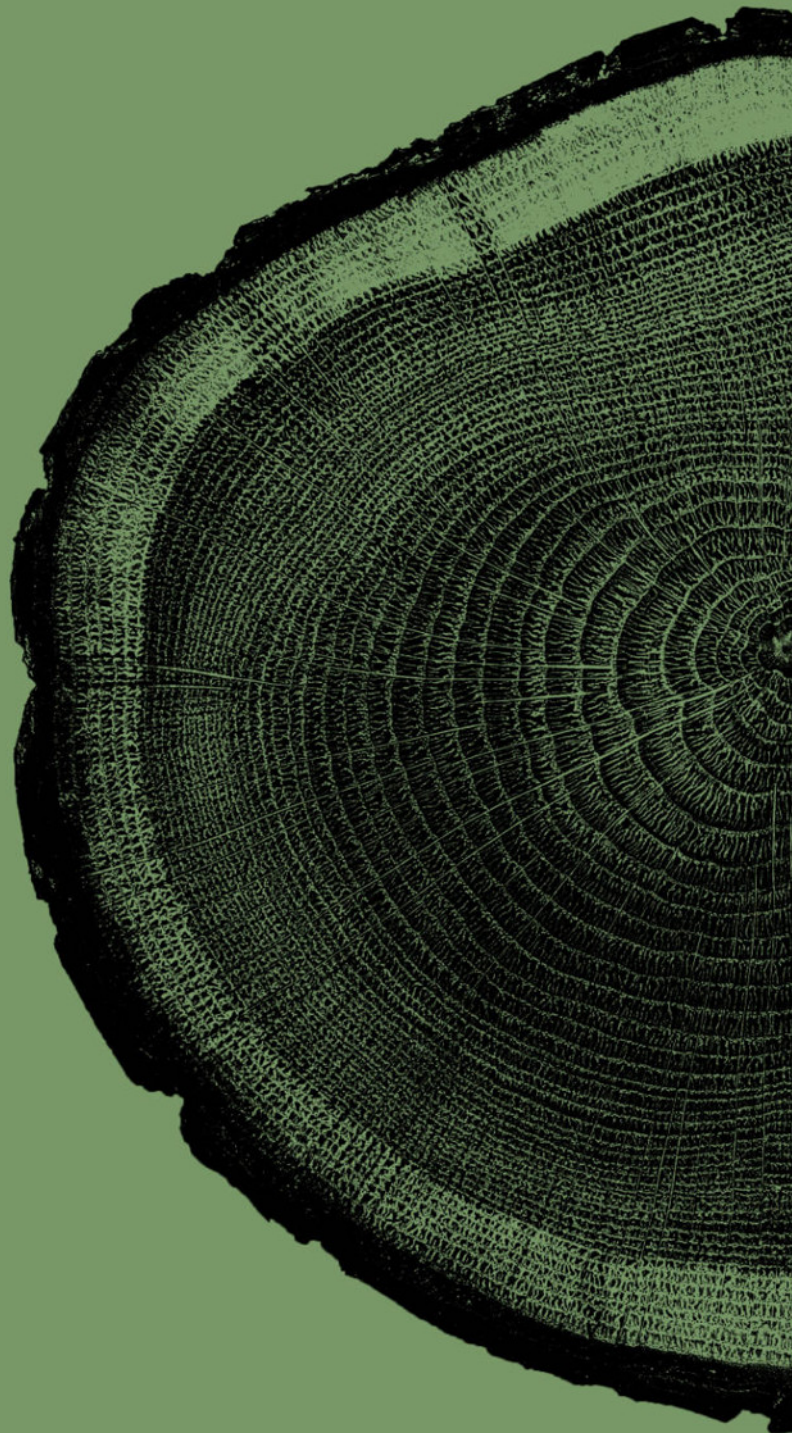
Recommended Use

Advertising & Packaging
Editorial & Publishing
Logo, Branding & CI
Poster & Billboards
Responsive Designs

Contact

Fontwerk GmbH
Prenzlauer Allee 186
10405 Berlin, Germany
hello@fontwerk.com

Available exclusively from
[fontwerk.com/fonts/
pangea](https://fontwerk.com/fonts/pangea).



Supercontinent Cycle

GONDWANA

On a global scale, *long-term*

The Forest Rangers

People, 1962

Mondays to Sundays for Future

EGLO.036 Tripswitch

Argyre Quadrangle MC-26

Κρεξε ta ti le te γε nduwo ya

Διοξείδιο του άνθρακα

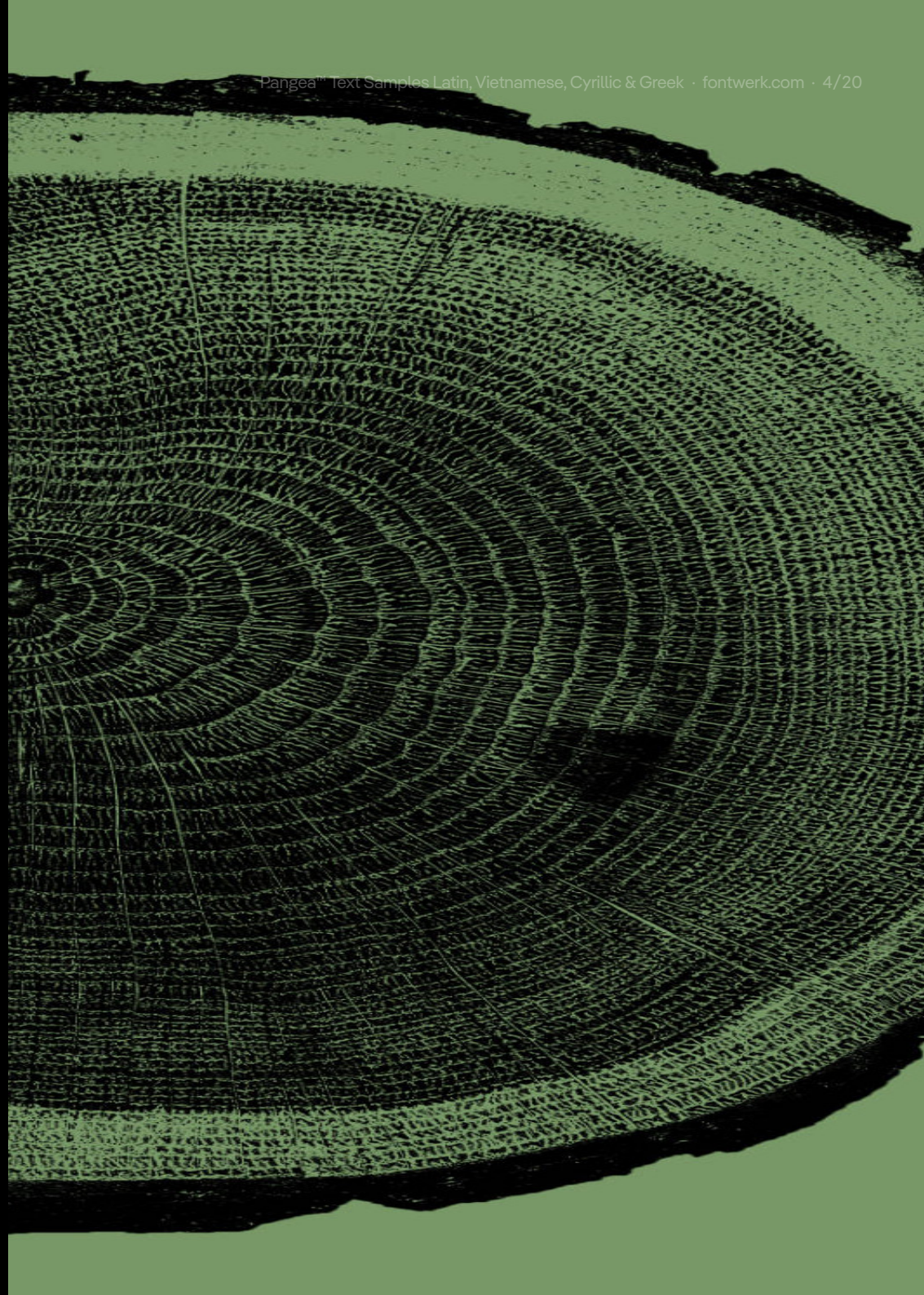
Hải Dương was built in 1804

Zwergplanet

ATMOS

Euphonic Sessions with Kyau & Albert March 2021

Самородная медь



10 Styles

Light · *Light Italic* · Пангея · Υπερήπειρος · *Пангея* · Υπερ
Regular · *Italic* · Пангея · Υπερήπειρος · *Пангея* · Υπερή
Medium · *Medium Italic* · Пангея · Υπερήπειρος · *Панг*
SemiBold · *SemiBold Italic* · Пангея · Υπερήπειρος · *Ι*
Bold · *Bold Italic* · Пангея · Υπερήπειρος · *Пангея* · Υ

3 UP
DOORS

Bold All Caps 100 pt

Light All Caps 65 pt

CALLAS [REDACTED]
[REDACTED] IN
CONCERT [REDACTED]



Medium Italic 40 pt,
Regular All Caps 18 pt

Medium 35 pt

How To Turn
8 Bitcoins

Into
1 Bytecoin

20 Mil Léguas Submarinas

Bold 56 pt, Português

The year 1866 was signalized by a remarkable incident, a mysterious and inexplicable phenomenon, which doubtless no one has yet forgotten. Not to mention rumors which agitated the maritime population, and excited the public mind, even in the interior of continents, seafaring men were particularly excited.

Medium 22 pt, English

Kaufleute, Reeder, Schiffskapitäne, Skipper und Master in Europa und Amerika, Offiziere der Kriegsmarine aller Länder und schließlich die Regierungen der verschiedenen Staaten beider Kontinente nahmen die Vorfälle außeror-

dentlich ernst. Seit einiger Zeit schon waren mehrere Schiffe auf hoher See „*einem gigantischen Etwas*“ begegnet, einem langen, spindelförmigen Gegenstand, der bisweilen phosphoreszierte und weitaus größer und schneller war als ein Wal.

Regular 16 pt, Italic 16 pt, Deutsch

Los hechos relativos a estas apariciones, consignados en los diferentes libros de a bordo, coincidían con bastante exactitud en lo referente a la estructura del objeto o del ser en cuestión, a la excepcional velocidad de sus movimientos, a la sorprendente potencia de su locomoción y a la particular vitalidad de que parecía dotado. De tratarse de un cetáceo, superaba en volumen a todos cuantos especímenes de este género había clasificado la ciencia hasta entonces. Ni *Cuvier*, ni *Lacepède*, ni *Dumeril* ni *Quatrefages* hubieran admitido la existencia de tal monstruo, a menos de haberlo visto por sus propios ojos de sabios.

Regular 12 pt, Italic 12 pt, Español

À prendre la moyenne des observations faites à diverses reprises, — en rejetant les évaluations timides qui assignaient à cet objet une longueur de deux cents pieds, et en repoussant les opinions exagérées qui le disaient large d'un mille et long de trois, — on pouvait affirmer, cependant, que cet être phénoménal dépassait de beaucoup toutes les dimensions admises jusqu'à ce jour par les ichthyologistes, — s'il existait toutefois. Or, il existait, le fait en lui-même n'était plus niable, et, avec ce penchant qui pousse au merveilleux la cervelle humaine, on comprendra l'émotion produite dans le monde entier par cette surnaturelle apparition. Quant à la rejeter au rang des fables, il fallait y renoncer.

Regular 8 pt, Français

Двадцать тысяч льё

Bold 56 pt, Ρусский

1866 год ознаменовался удивительным происшествием, которое, вероятно, еще многим памятно. Не говоря уже о том, что слухи, ходившие в связи с необъяснимым явлением, о котором идет речь, волновали жителей приморских городов и континентов, они еще сеяли тревогу и среди моряков.

Medium 22 pt, Ρусский

Купцы, судовладельцы, капитаны судов, шкиперы как в *Европе*, так и в *Америке*, моряки военного флота всех стран, даже правительства различных государств Старого и Нового Света

Regular 16 pt, Italic 16 pt, Ρусский

были озабочены событием, не поддающимся объяснению. Дело в том, что с некоторого времени многие корабли стали встречать в море какой-то длинный, фосфоресцирующий, веретенообразный предмет, далеко превосходивший кита как размерами, так и быстротой передвижения.

Οι αναφορές που είχαν καταγραφεί στα ημερολόγια διάφορων πλοίων σχετικά μ' αυτή την παρουσία, συμφωνούσαν με αρκετή ακρίβεια στην εξωτερική περιγραφή του εν λόγω αντικειμένου ή όντος, στην απίθανη ταχύτητα των κινήσεών του, στην εκπληκτική μηχανική ισχύ του, στην ιδιότυπη ζωή με την οποία φαινόταν προικισμένο. Αν ήταν κήτος, ξεπερνούσε σε όγκο όλα τα κήτη που ήταν ως τότε γνωστά στην επιστήμη. Ούτε ο Κυβιέ ούτε ο Λασεπέντ ούτε ο Ντυμερίλ ούτε ο Κατράζ θα παραδέχονταν την ύπαρξη ενός τέτοιου τέρατος – εκτός βέβαια αν το έβλεπαν με τα ίδια τους τα σοφά μάτια.

Regular 12 pt, Ελληνικά

Πράγματι, στις 20 Ιουλίου 1866 το ατμόπλοιο *Κυβερνήτης Χίγκινσον* της Ατμοπλοϊκής Εταιρείας Καλκούττας και Μπουρνάχ είχε συναντήσει αυτό τον κινούμενο όγκο πέντε μίλια ανατολικά από τις ακτές της Αυστραλίας. Ο πλοίαρχος Μπέικερ νόμισε στην αρχή ότι αντί-κριζε έναν άγνωστο σκόπελο· ήταν μάλιστα έτοιμος να προσδιορίσει την ακριβή του θέση, όταν δυο πίδακες νερού εκτοξεύτηκαν σφυρίζοντας από το μυστηριώδες αντικείμενο στον αέρα, σε ύψος εκατόν πενήντα ποδιών.

Light 8 pt, Light Italic 8 pt, Ελληνικά

522 Supported Languages

All of Fontwerk's typefaces support at least 94 Latin-based European languages such as English, German, French, Spanish, Czech, Polish, and Turkish. Some families also support Greek and Cyrillic (e.g. Russian, Bulgarian). If you need further languages or script systems (anything from Cyrillic and Greek to Hebrew, Arabic, Thai and even Chinese, Japanese, Korean (CJK), and Devanagari), we can make custom fonts for you.

▼ Latin

Afrikaans
Albanian
Asu
Basque
Bemba
Bena
Breton
Catalan
Cornish
Croatian
Czech
Danish
Dutch
Embu
English
Esperanto
Estonian
Faroese
Filipino
Finnish
French
Friulian
Galician
Ganda
German
Gusii
Hungarian
Icelandic

Inari Sami
Indonesian
Irish
Italian
Jola-Fonyi
Kabuverdianu
Kalenjin
Kamba
Kikuyu
Kinyarwanda
Latvian
Lithuanian
Lower Sorbian
Luo
Luxembourgish
Luyia
Machame
Makhuwa-Meetto
Makonde
Malagasy
Maltese
Manx
Meru
Morisyen
North Ndebele
Northern Sami
Norwegian Bokmål
Norwegian Nynorsk
Nyankole
Oromo

Polish
Portuguese
Quechua
Romanian
Romansh
Rombo
Rundi
Rwa
Samburu
Sango
Sangu
Sanskrit
Sena
Serbian
Shambala
Shona
Slovak
Slovenian
Soga
Somali
Spanish
Swahili
Swedish
Swiss German
Taita
Teso
Turkish
Upper Sorbian
Uzbek
Vietnamese

Volapük
Vunjo
Walser
Welsh

▼ Cyrillic

Abaza
Abkhaz
Adyghe
Aghul
Altai
Avar
Azerbaijani
Bashkir
Belarusian
Bosnian
Bulgarian
Buryat
Chechen
Chukchi
Chuvash
Crimean Tatar
Dargwa
Dungan
Erzya
Even
Evenki
Gagauz

Hill Mari
Ingush
Kabardian
Kalmyk Oirat
Karachay-Balkar
Karakalpak
Kazakh
Khakas
Khanty
Khinalugh
Komi
Koryak
Kumyk
Kyrgyz
Lak
Lezgian
Macedonian
Mansi
Meadow Mari
Moksha
Moldovan
Mongolian
Montenegrin
Nanai
Nenets
Nivkh
Nogai
Ossetic
Permyak
Russian

Rusyn
Rutul
Selkup
Serbian
Tabasaran
Tajik
Talysh
Tat
Tatar
Turkmen
Tuvan
Udmurt
Uyghur
Ukrainian
Uzbek
Yakut
Yup'ik

▼ Greek

Greek

Bold 40 pt, Regular 10 pt,
Bold 8.5 pt, Regular 8.5 pt

522 Supported Languages

▼ African Latin	Atayal	Breton	Dehu	Gheg Albanian	Kabyle	Lamnso'
Abron	Awa-Cuaiquer	Bushi	Dendi (Benin)	Gilbertese	Kaingang	Langi
Acheron	Awetí	Candoshi-Shapra	Dinka	Gonja	Kako	Latin
Achinese	Baatonum	Caquinte	Ditammari	Guadeloupean Creole French	Kalaallisut	Ligurian
Achuar-Shiwiar	Bafia	Caribbean Hindustani	Dongolawi	Guinea Kpelle	Kalenjin	Lingala
Adamawa Fulfulde	Bagirmi Fulfulde	Cashibo-Cacataibo	Duala	Gusii	Kamba (Kenya)	Lobi
Adangme	Balinese	Cashinahua	Dyula	Gwich'in	Kanuri	Lombard
Afar	Bambara	Cebuano	Eastern Abnaki	Haitian	Kaonde	Lozi
Afrikaans	Baoulé	Central Alaskan Yupik	Eastern Arrernte	Hakha Chin	Kaqchikel	Luba-Katanga
Aghem	Bari	Central Atlas Tamazight	Eastern Maninkakan	Hän	Karelian	Luba-Lulua
Aguaruna	Basa (Cameroon)	Central Aymara	Eastern Oromo	Hani	Kasem	Lukpa
Aja (Benin)	Basque	Central Mazahua	Embu	Hausa	Kekchí	Luo (Kenya and Tanzania)
Amahuaca	Batak Dairi	Central-East. Niger Fulfulde	Ese Ejja	Hawaiian	Kenzi	Maasina Fulfulde
Amarakaeri	Batak Karo	Chachi	Ewe	Hiligaynon	Khasi	Madurese
Amis	Batak Mandailing	Chavacano	Ewondo	Hopi	Khoekhoe	Makhuwa
Andaandi	Batak Simalungun	Chayahuita	Falam Chin	Huastec	Kikuyu	Makhuwa-Meetto
Anii	Batak Toba	Chickasaw	Fanti	Ibibio	Kimbundu	Makonde
Anuta	Bemba (Zambia)	Chiga	Fijian	Igbo	Kinyarwanda	Makwe
Ao Naga	Bena (Tanzania)	Chiltepec Chinantec	Filipino	Iloko	Kituba (DRC)	Malagasy
Apinayé	Biali	Chokwe	Fon	Indonesian	Kongo	Malaysian
Arabela	Bikol	Chuukese	Foodo	Ixcatlán Mazatec	Konzo	Mam
Aragonese	Bini	Cofán	Friulian	Jamaican Creole English	Koyra Chiini Songhay	Manx
Arbëreshë Albanian	Bislama	Congo Swahili	Ga	Japanese	Koyraboro Senni Songhai	Maore Comorian
Asháninka	Boko (Benin)	Cook Islands Māori	Ga'anda	Javanese	Krio	Maori
Ashéninka Perené	Bora	Cornish	Galician	Jola-Fonyi	Kuanyama	
Asturian	Borana-Arsi-Guji Oromo	Corsican	Ganda	K'iche'	Kwasio	
Asu (Tanzania)	Borgu Fulfulde	Creek	Garifuna	Kabiyè	Ladino	
	Bouna Kulango	Dagbani	Gen	Kabuverdianu	Lakota	

Bold 40 pt, Regular 10 pt,
Bold 8.5 pt, Regular 8.5 pt

522 Supported Languages

Mapudungun	Nateni	Páez	Sardinian	Standard Malay	Tsonga	Western Frisian
Marshallese	Navajo	Palauan	Scots	Sukuma	Tswana	Western Niger Fulfulde
Masai	Ndonga	Paluan	Scottish Gaelic	Sundanese	Tumbuka	Wik-Mungkan
Matsés	Neapolitan	Pampanga	Secoya	Susu	Tuvalu	Wiradjuri
Mattokki	Ngazidja Comorian	Papantla Totonac	Sena	Swahili	Twi	Wolof
Mauritian Creole	Ngiemboon	Papiamento	Serer	Swati	Tzeltal	Xavánte
Mbelime	Ngomba	Paraguayan Guaraní	Seri	Tachelhit	Tzotzil	Xhosa
Mende (Sierra Leone)	Nigerian Fulfulde	Pedi	Seselwa Creole French	Tagalog	Uab Meto	Xwela Gbe
Meriam Mir	Niuean	Pichis Ashéninka	Shambala	Tahitian	Umbundu	Yagua
Meru	Nobiin	Piemontese	Sharanahua	Taita	Upper Guinea Crioulo	Yanesha'
Meta'	Nomatsiguenga	Pijin	Shawnee	Tasawaq	Urarina	Yangben
Metlatónoc Mixtec	North Marquesan	Pintupi-Luritja	Shilluk	Tedim Chin	Venda	Yanomamö
Mezquital Otomi	North Ndebele	Pipil	Shipibo-Conibo	Tem	Venetian	Yao
Mi'kmaq	Northeastern Dinka	Pohnpeian	Shona	Teso	Veps	Yapese
Minangkabau	Northern Kissi	Potawatomi	Shuar	Tetum	Võro	Yindjibarndi
Mirandese	Northern Qiandong Miao	Pulaar	Sicilian	Tetun Dili	Waama	Yom
Mískito	Northern Uzbek	Pular	Siona	Ticuna	Waci Gbe	Yoruba
Miyobe	Nuer	Purepecha	Soga	Timne	Wallisian	Yucateco
Mizo	Nyamwezi	Quechua	Somali	Tiv	Walser	Záparo
Moba	Nyanja	Romansh	Soninke	Toba	Wangaaybuwan-Ngiyambaa	Zapotec
Mohawk	Nyankole	Rotokas	South Marquesan	Tojolabal	Waorani	Zarma
Montagnais	Nyemba	Rundi	South Ndebele	Tok Pisin	Waray (Philippines)	Zulu
Mossi	Nzima	Rwa	Southern Aymara	Tokelau	Warlpiri	Zuni
Mundang	Occitan	Samburu	Southern Dagaare	Tonga (Tonga Islands)	Wasa	
Murrinh-Patha	Ojiltán Chinantec	Samoan	Southern Qiandong Miao	Tonga (Zambia)	Wayuu	
Murui Huitoto	Orma	Sango	Southern Sotho	Tosk Albanian	West Central Oromo	
Mwani	Oroqen	Sangu (Tanzania)	Sranan Tongo	Totontepec Mixe	West-Central Limba	
Naga Pidgin	Otuho	Saramaccan	Standard Estonian	Tsafiki	Western Abnaki	

Bold 40 pt, Regular 10 pt,
Bold 8.5 pt, Regular 8.5 pt

Latin Uppercase & Lowercase

ABCDEFGHIJKLMNOPQRSTUVWXYZ abcdefghijklmnopqrstuvwxyz

Accented Latin Uppercase

ÀÁÂÃÄÅ Æ Ç È É Ê Ë Ì Í Î Ï Ñ Ò Ó Ô Õ Ö Ø Ù Ú Û Ü Ý Þ à á â ã ä å æ ç è é ê ë ì í î ï ð ñ ò ó ô õ ö ø ù ú û ü ý þ ÿ

Accented Latin Lowercase

[illegible]

African Latin Uppercase

[illegible]

African Latin Lowercase

[illegible]

Cyrillic Uppercase & Lowercase

[illegible]

Greek Uppercase & Lowercase

ΑΒΓΔΕΖΗΘΙΚΛΜΝΞΟΠΡΣΤΥΦΧΨΩΑΕΗΙΟΥΩΪΨ αβγδεζηθικλμνξοπρςστυφχψωϊΐϋϋϖϗόώάέή

Numerals & Currency Symbols

00123456789 00123456789 00123456789 00123456789 ⁰¹²³⁴⁵⁶⁷⁸⁹/₀₁₂₃₄₅₆₇₈₉ / ⁰¹²³⁴⁵⁶⁷⁸⁹
_{1/2 1/3 1/4 1/5 1/6 1/7 1/8 1/9 1/10} a° B B C C C \$ d e f G H I J K L M N P Q R S T U V W X Y

Punctuation, Mathematical Signs & Symbols

.,:;...!|?;¿·•"¶?;#//\+|(){}[]-----_""""«»<>""""<>·;·%≅·.≐+-x÷=≠><≥≤±≈~¬^∞∅∫ΩΔ∏Σ√μδ%%

Arrows & Shapes

[illegible]

Fractions #FRAC, Numerators #NUMR, Denominators #DNOM

4/8521 ⁴/8521

Ordinals #ORDN

6a 2o 6^a 2^o

Scientific Inferiors #SINF

CO2 CO₂

Superscript #SUPS, Subscript #SUBS

m3 M6 m³ M₆

Localized Forms #LOCL

Ł Łł → Ł Łł (Catalan), Í Ĳ → Í Ĳ (Dutch) and Ș ț → Ș Ț (Romanian) included

míjn

míjn

Slashed Zero #ZERO

7380

7380

How can a typeface improve the world? Even before he had drawn the first letter, Christoph Koeberlin wanted to answer this question. He wanted to prove that designers can positively influence the environment.

One way that he is doing this is by donating 25% of his income from Pangea to the preservation of the rainforest and to large-scale reforestation projects involving the local population. With every font license you purchase, you are helping to preserve one of the most important factors in slowing down climate change. It's just a bit of a shame that the name Futura had already been taken by another geometric sans serif typeface, as it would have been more appropriate here.

For Christoph, the connection and connotation of the name was of great importance. Just like the primeval continent that the typeface is named after, Pangea is a symbol of not only the big (common) picture but of global cooperation. While *Gergő Kókai* from Hungary supported him in the design of the upright characters, he brought *Tanya George* from India and the Japan-based *Gabriel Richter* on board to work on the italics. He consulted with *Irene Vlachou* from Greece, *Ilya Ruderman* from Russia, *Donny Trương* from the USA and *Paul Hanslow* from Australia to ensure the quality of the Greek, Cyrillic, Vietnamese and African Latin characters. The spacing and the kerning of the font would not have been possible without *Igino Marini* from Italy and his superior iKern technology. A broad foreign language extension seems oblig-

atory for this omnicultural approach and in fact, in addition to the European Latin, Extended Cyrillic, Greek and Vietnamese (that are already included), Arabic is currently in the making, and Hebrew and other languages are to follow. At the end of 2021, Pangea was expanded to provide Latin-based support for 360 African and indigenous North American languages. It is available as a corresponding subset Pangea Afrikan and is free of charge and included in the Standard License!

It's important to mention that the typeface works remarkably well due to its refined space saving — it is more condensed than a normal geometric sans. Indeed, this could even be sold as a further environmentally friendly and eco-conscious feature as it not only saves paper but screen capacity, but maybe that would be too much of a good thing. This characteristic is actually the result of the smart design decisions that Christoph Koeberlin made during the five years he spent working on Pangea. Another outstanding trait is the consequence between the compactness and closeness, while diagonal terminals and round dots make for a friendly appearance. He successfully manages the balancing act between narrow grotesque typefaces and geometric ones. This approach is also demonstrated in the rather large x-

height as well as the barely open forms, but also in the unusual 'spectacle-g', double-story a and l with foot. The more common single-story 'g' and 'a' as well as the straight 'l' are, of course, accessible as OpenType alternatives.

The second member of the family, Pangea Text, is built upon the same foundations but aims to improve legibility. With longer ascenders and descenders, more open forms, slight ink traps and more generous spacing, this variant is great for use in extensive texts and is particularly good for use in small sizes as well as on screens. Not only do both families complement and harmonize with each other, but the decision to work with optical sizes is what makes the core family's uncompromising nature and attractive appearance possible in the first place.

Christoph Koeberlin is not only a designer of highly original typefaces (he also co-designed FF Mark and created Fabrikat), he is also one of the world's most sought after Font Engineers. As you would expect from such an expert, the entire superfamily comes with a variable font version. This version allows a smooth and infinite adjustment; of font weights from Light to Bold, of ascenders and descenders, of the characters' openness, of spacing, of the angle of the slope and of ink traps as well as the seamless switching between alternates. Nine axes raise the bar in this area. As with all other *Fontwerk* fonts that are already available as variable fonts, the Pangea variable versions are included in the super family package at no additional cost and can be tested free of charge as subsetted Trial Fonts.

Saving the world through one typeface at a time — it's worth a try.

SemiBold 18 pt. Regular 10 pt. Italic 10 pt

DESIGNER

Christoph Koeberlin

Christoph Koeberlin has polished, finessed and refined typefaces for a number of the top labels such as *FontFont*, *Swiss Typefaces*, *TypeBy*, *HVD Fonts*, *Milieu Grotesque* and *Production Type*. Without him the Fontwerk Engineering Team would not be the same. As a very good friend of the company from its inception, he has been a great support to what we are doing and will always have a place of honour in our story.

Proof of his prowess as an exceptional type designer is demonstrated through the fact that his first families, FF Mark (designed in collaboration with Hannes von Döhren and the FontFont Type Department in 2013 and Fabrikat (HVD Fonts 2016) very quickly became bestsellers. At the moment, he is concentrating on his project sportsfonts.com and in particular, on custom type projects. His exclusive custom typefaces for his favourite football team 1. FC Kaiserslautern and for the Bundesliga Club FSV Mainz 05 were very well received by fans and experts.



© Lars Wiedemann

The father of two sons, he loves to work with others, especially on his beloved typographic knowledge website, Typefacts. All of this mostly takes place in his legendary allotment garden office in Prenzlauer Berg, where in quieter moments, he also thinks about sustainability, chocolate and expanding his record collection.

📍 Berlin, Germany

🌐 christoph.koe.berlin

🐦 twitter.com/koeberlin

File Formats and Licensing

All our typefaces are provided in OTF (OpenType fonts with PostScript outlines; usually used for desktop, apps, ebooks, and hardware) and WOFF as well as WOFF2 (Web Open Font Format; OpenType fonts for the use on the web) formats. Most other formats such as EOT, SVG, or TTF are not necessary anymore today. However, we can generate those files in case they are really needed.

We believe we have one of the simplest licensing models in the industry. If we were sitting in the pub, we could draw it out on a beer mat. It's hard enough to find the right font, so we want to make the licensing as simple as possible. What does this mean? No drop-down-menus, just a LICENSE IN ONE CLICK. You pay just once and that's that as long as you keep within the boundaries of use as stated in the License.

Please check our website www.fontwerk.com/licensing for further information.

SemiBold 40 pt, Regular 10 pt, Bold 14 pt, SemiBold 8.5 pt,
Regular 8.5 pt, Medium 8.5 pt All Caps, SemiBold 10 pt

TRIAL

1 User for testing purposes only

[CLICK HERE TO DOWNLOAD
FOR FREE NOW!](#)

STANDARD

Print: 1 User
Web: 100,000 Pageviews/month
App: 1,000 Downloads
eBook: 10,000 Downloads

EXTENDED

Print: 15 Users
Web: 1,500,000 Pageviews/month
App: 15,000 Downloads
eBook: 150,000 Downloads
Broadcasting: 1,500,000 Viewers

TRIAL The 'Trial Fonts' contain around ¼ of the actual characters and usually no OpenType features. The license allows free use during the test phase. Both desktop and webfonts are included so that you can design mockups, websites, apps and eBooks etc. and then present to the client without having to commit to the purchase. Only when it is clear that the font fits and the actual projects go live or are produced, will you need to purchase the Standard version.

STANDARD Our most popular license that includes use in Print (desktop) for one user and one project for use on the Web (100,000 pageviews per month), in an App (1,000 downloads) and eBooks (10,000 downloads). If more users, projects, pageviews or downloads are required, either several Standard licenses or an Extended license must be purchased.

EXTENDED This is comparable to a MUL, a multi-user-license. Extended covers use in Print for 15 users and up to 15 projects with total use on the Web (1.5 million pageviews per month), in Apps (15,000 downloads) and eBooks (150,000 downloads). It is also the right license for use in Broadcasting (1.5 million viewers).

ENTERPRISE For all other situations that are not covered by one of these licenses, an individual agreement is necessary. We strive to deliver them as quickly and easily as possible.

Address

Fontwerk GmbH
Prenzlauer Allee 186
10405 Berlin, Germany

Website

fontwerk.com

Email

hello@fontwerk.com
We work on Central
European time, and
will respond as soon
as we can.

Social Media

Instagram, Twitter,
LinkedIn: @fontwerk

SemiBold 10 pt, Regular 10 pt,
Medium 20 pt, Light 20 pt

We craft modern typefaces and provide innovative font engineering and type design services.

We **believe** that convincing communication is only possible with the most aesthetically pleasing and most technically sound fonts.

Our **vision** is to provide easy access to such fonts through free trial versions, a simple licensing model and one of the fastest ordering processes around.

Our long-lasting designs add **value** above and beyond the actual cost. These fonts can be downloaded directly by discerning agencies,

designers and brands or ordered as a perfectly fitting custom type solution in addition to font engineering services.

We hope to **contribute** to something bigger by promoting talented designers from around the world with whom we work under the fairest conditions.

Our **motivation** is simply the love of good design. Outstanding type is our contribution to that.

Related Typeface

Pangea Text

Pairing Suggestions

Rag

Pangea Text
Christoph Koeberlin

Rag

Nikolai
Franziska Weitgruber

Rag

Supermarker
Ulrike Rausch



Download Free Trial Fonts on [Fontwerk.com](https://fontwerk.com)